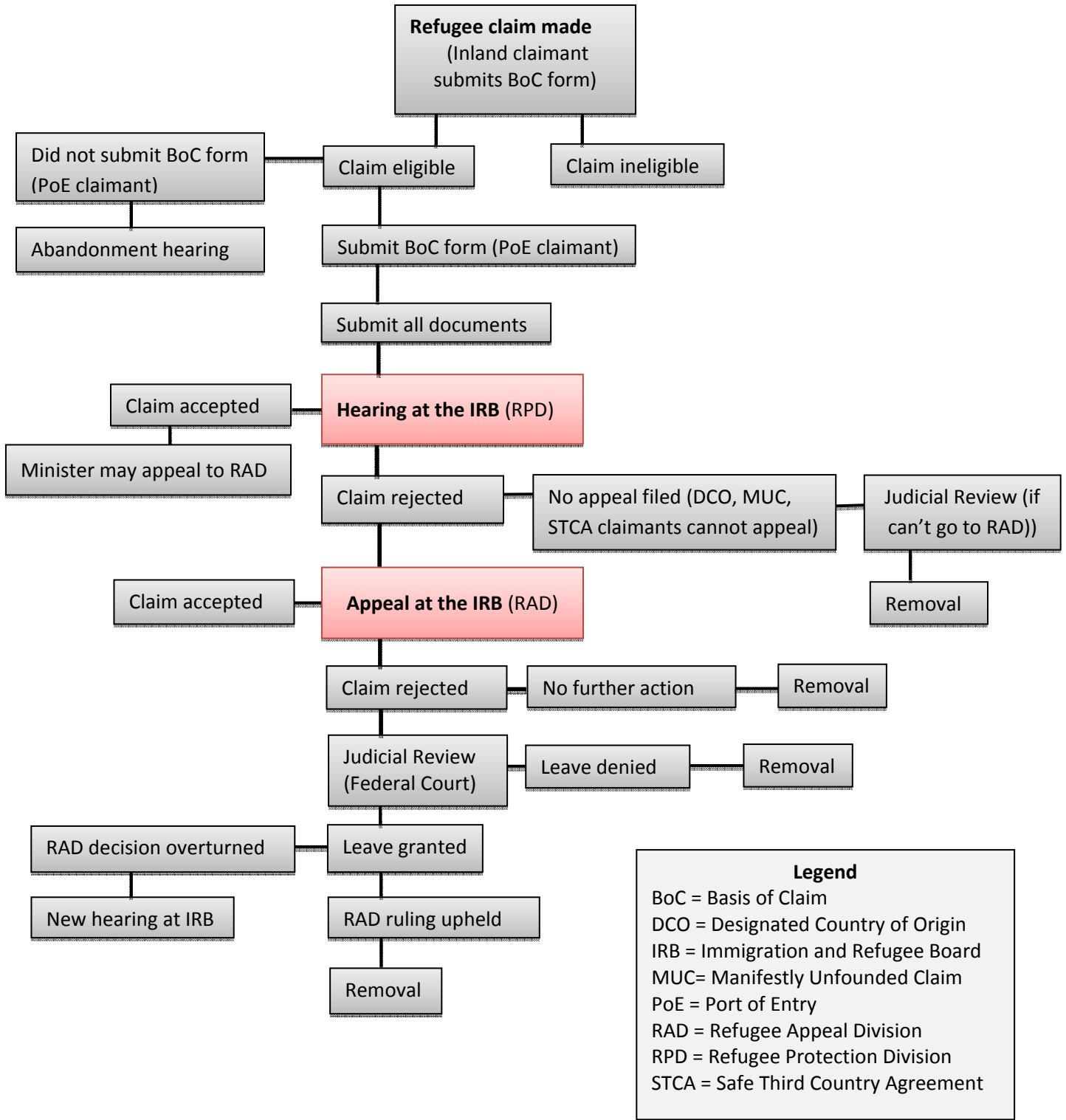




Canadian Refugee Claim Process (after Refugee Reform, 15 December 2012)



Legend
 BoC = Basis of Claim
 DCO = Designated Country of Origin
 IRB = Immigration and Refugee Board
 MUC = Manifestly Unfounded Claim
 PoE = Port of Entry
 RAD = Refugee Appeal Division
 RPD = Refugee Protection Division
 STCA = Safe Third Country Agreement